









YEAR 3/4 TERM 1 2020

Hello and welcome back to school!
We hope everyone enjoyed the beautiful summer break. We are excited for the new year and cannot wait to get to know you and your family better!
Let's work together and make this year a memorable one!

MEET THE TEACHERS

Jodie Bawden	Margarita Chartler	Christelle Lim	Helen Nguyen-Pinili	Emily Prato	Anisah Furness
					
Year Level SPEL Leader	School Choir and Dance Leader	Student Voice/Student Representative Council Leader	Religious Education Leader	P.E Teacher Classroom Teacher on Thursdays (3/4BA) and Fridays (3/4NG)	Visual Arts Teacher Classroom Teacher on Thursday (3/4LI) and artist in residence

IMPORTANT DATES	EVENTS
February 11th 2.00 – 7.30PM	Getting to know you conversations
February 12th 3.30 – 5.30PM	Getting to know you conversations
February 27th	Task Works Overnight stay
February 26th	Ash Wednesday
March 9th	Labour Day – No School
March 20th	Harmony Day
March 27th	Last Day of Term 1



Arriving to school on time



Coming to school on time is very important! A kind reminder that **school starts at 8.45AM.**

School gates open at 8.20AM.

Sunsmart!

When UV is 3 or above be SunSmart



Slip



Slop



Slap



Seek



Slide

Hats must be worn especially when the UV index is above 3.

Please make sure hats are brought to school each day and must be worn!



Class Dojo

St Anthony's deeply values partnership with our families in developing student learning. Our aim is to engage you and your child's learning by sharing and updating their learning via Class Dojo. If you have any questions, please feel free to ask your child's teacher.

Healthy eating and Wrapper Free Food



Our school is committed to being a Nude Food school. In an effort to cut down on waste and encourage an

attitude of care for our environment. We encourage you to keep this in mind when packing your child's lunch box.

SPECIALIST

CLASS	JAPANESE CULTURE	LIBRARY	P.E (SPORT)	PERFORMING ARTS	VISUAL ARTS
					
3/4BA	Monday	Wednesday	Monday	Monday	Monday
3/4CH	Monday	Thursday	Monday	Monday	Monday
3/4LI	Monday	Wednesday	Monday	Monday	Monday
3/4NG	Monday	Tuesday	Monday	Monday	Monday



FAITH BASED INQUIRY

This term students will be exploring:

- History and significance of Aboriginal and Torres Strait Islanders people
- Early first years
- Catholic Social Teachings:
“Preferential Option for the Poor” and “Subsidiarity and Participation”



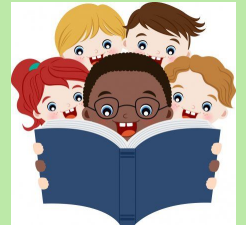
LITERACY

This term students will be learning:

- Recount
- Persuasive
- Location explicit information
- Inferring using pictures with words
- Inferring the meaning of unfamiliar words in a text
- Grammar
- Punctuation

To help your child at home, you can:

- Share their highlight of their day
- Read together as a family
- Ask your child questions about the book they're reading



MATH

This term, students will be learning:

- Place Value and Counting
- Location
- Addition and Subtraction
- Length and Perimeter

To help your child at home, you can:

- Quiz your child on addition and subtraction
- Estimate the length of objects

SEL - SOCIAL EMOTIONAL LEARNING

This term in SEL, students will focus upon Emotional Literacy and Personal Space. We will:

- Review the influence of people, situations and events upon our emotions.
- Explore how emotional responses vary in depth and strength.
- Develop strategies to interact positively with others in different situations.
- Examine how success, challenge and failure strengthen our personal identities.
- Analyse the concept of 'personal space'.
- Use mindfulness as a way to create a positive mind space.
- Cyber safety