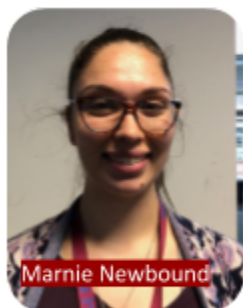




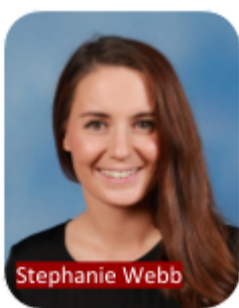
Level 5/6 - Term 2 Newsletter

Welcome back to Term 2!

The students have returned to school nice and relaxed and so have the teachers. Looking forward to a fantastic term! If you have any questions please see your child's teacher.



Marnie Newbound



Stephanie Webb



Terry Harisiou



Ashlee Doyle



Rula Stavridis



Victoria Gelberg



Deana Portia

Sunsmart Information

Hats must be worn in Term 2 when the UV index is above 3, which is in accordance with the Sunsmart policy. No hat no play. The correct school hat must be worn. Please make sure hats are brought to school each day and must be worn at both recess and lunchtime as necessary.

Important Dates

April

Click Against Hate Incursion - 31st

May

Click Against Hate Incursion - 1st
 NAPLAN - 14th, 15th, 16th
 Werribee Zoo Excursion - 23rd
 Learning Through Lunch - 28th
 School Photos - 29th (winter uniform)

June

Feast of St Anthony's - 13th
 Three Way Learning Conversations - 25th and 26th
 Last Day of Term 2 - 28th

Recess and Lunch Times

Please note we are continuing to have recess and lunch at the following times

Recess- 11 am - 11:40 am

Lunch- 1:45 pm - 2:25 pm

We are encouraging the students to eat their larger meal at 10.50am during the eating time. Canteen orders will be given out at 10.50am.

Each break time will be 40 minutes with time allocated to eating before going out to play.

Library Timetable

**5/6 Doyle/Portia,
 Harisiou and
 Newbound**

Wednesday

Remember to bring books back to return them on time.

**5/6 Webb and
 Stavridis**

Wednesday

Remember to bring books back to return them on time.

Specialist Timetable			
Class	Performing Arts	Physical Education	Visual Art
All 5/6 classes	Wednesday	Wednesday	Wednesday

Term 1 Overviews

Literacy

In literacy this term, we will be focusing on the following topics based around writing, reading and comprehension and speaking and listening.

- Narrative writing
- Information reports
- Comprehension skills
 - making connections
 - predicting
 - inferring
 - summarising
 - identifying information
- Presentation skills including tone, pace, volume and voice projection, expression, stance and eye contact

At home you could...

- encourage your child to read daily
- ask questions about what your child is reading
- discuss characters in books and films
- talk about your child's interests in greater detail
- encourage them to read a variety of narrative texts, including biographies, novels or fairy tales. A narrative text tells a story, has a problem, characters and a setting.
- encourage them to read appropriate news articles to expose them to the language and structure used.



Numeracy

In numeracy this term, we will be focusing on the following topics based around number and place value, measurement and geometry and chance and data.

- Angles - identifying, estimating and measuring angles
- Shapes - identifying, analysing, comparing the features of 2D and 3D shapes
- Chance - predicting the likelihood of events happening
- Data - interpreting and comparing a range of data displays
- Multiplication
- Division
- Capacity, Mass and Volume - connecting the three units

At home you could...

- identify acute, right or obtuse angles in your environment
- identify different 2D and 3D shapes in your home
- use language like probably, certainly, definitely, impossible, possible when thinking about the likelihood of events
- encourage your child to practise learning their times tables for automatic recall
- encourage them to help you in the kitchen and talk about litres, millilitres, grams, kilograms

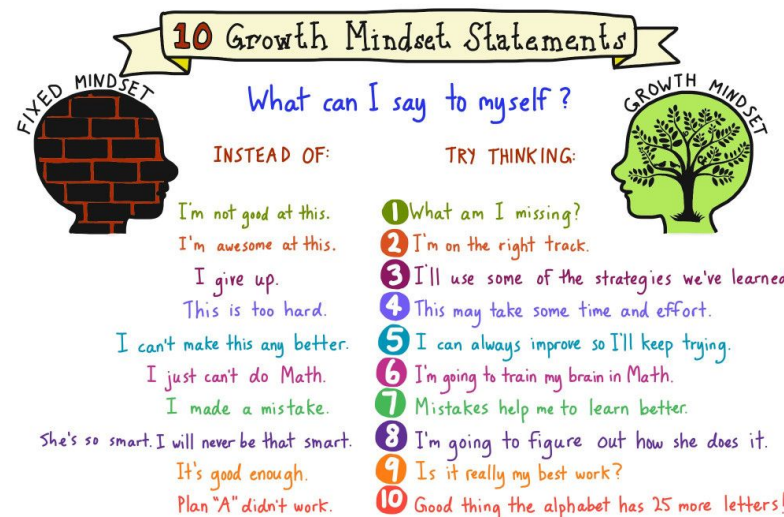
Social and Emotional Learning

In SEL this term, we will be focusing on creating and understanding different coping strategies to deal with stress and challenges. We will also continue to have a strong focus on mindfulness and how it can benefit us in our learning and in our lives.

- Self Talk
 - Students understanding the difference between positive and negative self-talk
- Persistence and Growth Mindset
 - Students identifying and using the power of 'YET' to difficult tasks and challenges they might face
- Enthusiasm
 - Being positive and having a good attitude towards learning and school activities
- Problem Solving
 - Being creative and thinking in different ways in order to solve a problem
- Collaboration
 - Working together as a team in order to achieve a shared goal
- Communication and Student Voice
 - Using positive communication skills in order to achieve shared goals and to give and receive feedback
- Mindfulness
 - Taking time to calm our minds and bodies to prepare for learning, to assist managing our emotions and when problem solving and when feeling stressed

At home you could...

- ask your child about how they are demonstrating good leadership
- encourage your child to use the 'Growth Mindset' model (Eg. I can do it, I will succeed, I can't do it...YET)
- ask your child/children to share a mindfulness strategy they know with you at home



(Original source unknown)

@sylviaaduckworth

Faith Based Inquiry

This term in our Faith Based Inquiry we will be exploring the concept of Global Citizenship. Through this, and the Religious Education Curriculum Framework, we will connect the Catholic Social Teaching of Stewards of God's Creation. This involves understanding how we are called to look after all of God's Creation

At home you could...

- encourage your child to think about ways they can care for the environment at home - recycling, picking up rubbish
- talk to your child about global citizenship and what it means to be a global citizen
- reflect with your child about their experiences on the

and to take care of our environment.

Students will connect this learning with other learning content areas such as Science and also through their visit to Werribee Zoo where they will participate in the Fighting Animal Extinction program. They will also explore the Dinosaur exhibit there and use this learnt knowledge in their project at the end of the term.

Students will attend and participate in Mass throughout this term. Please feel free to join us - check the school newsletter for dates and times.

excursion to Werribee Zoo.



Parent Partnerships

We deeply value our partnership with parents in developing student learning. If you are available to assist in the classroom, level or school in any way please speak to your child's teacher.



Birthdays and Healthy Eating!

In keeping with our healthy eating policy, we ask that you bring a healthier option if you would like to bring something to share to celebrate your child's birthday! Please remember to include healthy options for snack and lunch each day as well.



NAPLAN

This term grade 5 students will be completing NAPLAN testing on the 14th, 15th and 16th of May. Students will be tested on their knowledge of Literacy and Numeracy concepts. Teachers will be preparing grade 5 students in the classroom and preparation is actually all of the learning students have had since Prep, but if you would like your child to do any extra preparation at home please see their classroom teacher.

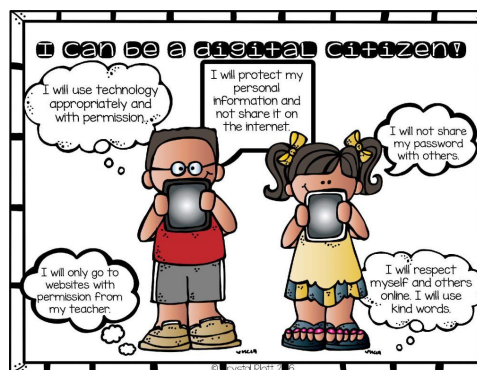
High School Transitions

Students hoping to attend a *State High School* in 2020 (Grade 6 at St Anthony's in 2019) will receive High School Transition Packs to assist with the enrolment process. Please be mindful that these have not yet been published and will be sent out as soon as the school has received them. There will also be an Information Night held at St Anthony's for Grade 5 students in 2019 who wish to attend a *Catholic High School* in 2021 who have yet to enrol. Dates for this to be confirmed later in the term.



Cybersafety

It is extremely important to be safe and respectful when using the internet at school and at home.



Welcome back to Term 2!

