



ST. ANTHONY'S SCHOOL

19th July, 2020

Re: Onsite Remote and Online Learning

Dear Parents, Guardians and Families,

Please see the information below for the successful and safe attendance for all staff and students at St Anthony's over the coming weeks.

- Please arrive with your child/ren between 8.30 - 8.50am. Not before. You may park in the front car park or in the surrounding streets and walk.
- Please walk around the Hall, not through the worksite.
- There are two gates to enable you to socially distance and avoid gathering. These are clearly marked with signage.



- At the gates a member of the leadership team will meet you, provide you with a clipboard to record and declare your health and community interaction information, sign in your child, ask you all to sanitize and take your child's temperature.
- You will need to remain with your child until all of these requirements are complete.
- Temperature checks to be administered for all students entering school grounds. Checks will be administered with an Infrared Thermometer by a member of the leadership team at the entry gate.
- The attached temperature guide will be followed, maintaining respect and dignity of the student.
- All temperatures equal to or greater than 37.5 degrees must be recorded in writing.

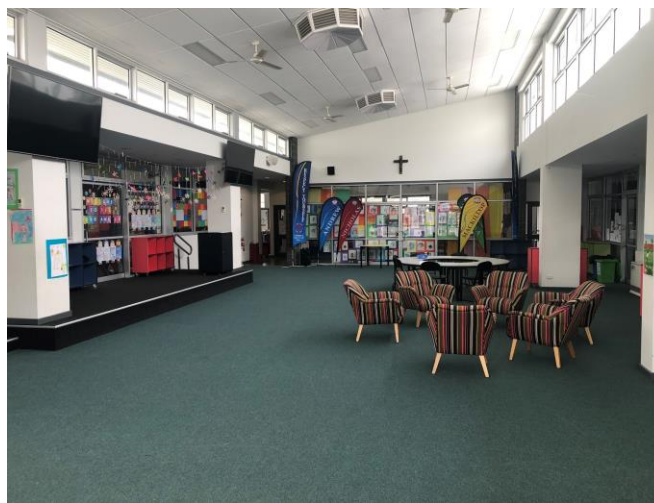
EVERY PERSON FLOURISHING AND KNOWN

office@sanoblepark.catholic.edu.au | 95460044 | 90 Buckley St, Noble Park, VIC, 3174 | www.sanoblepark.catholic.edu.au | ABN: 64 199 831 816

St Anthony's is a Child Safe School. Promoting the safety, wellbeing and inclusion of all children.

Temperature reading	Required action
Less than 37.5° C	The student should be advised to proceed to class.
Equal to or greater than 37.5° C on first reading	The student should be asked to wait in a separate room and have their temperature re-checked in 15 minutes. If the student is wearing outerwear, the staff member should suggest the child remove this once they are indoors.
Equal to or greater than 37.5° C on second reading	The student should return home with their parent/carer. If a parent/carer is not present, the student will need to be isolated and the parent/carer contacted to collect them from school as soon as possible. Families should be encouraged to seek the advice of their healthcare professional who can advise on next steps and COVID-19 testing.

- All students will be supervised in the Padua building. This time due to high numbers they will be in 4 different groups. There is access to many other areas to enable social distancing wherever possible.



- Pick up is strictly at 3.20pm or before. Please ensure that you are waiting near the gates you arrived, maintaining social distancing. We advise you to pick up earlier if you are able to so that parents are not gathering at pick up points. **No student can walk to the car park unsupervised.**

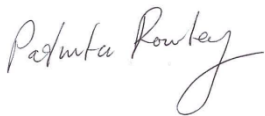
EVERY PERSON FLOURISHING AND KNOWN

- Aftercare is available from 3.20pm onwards for those with longer work hours.
 - Students must wear a full uniform, their sports uniform is fine. They need their hat, water bottle, lunch box and other activities to do such as colouring in books, puzzles, books to read and toys for play.
 - Students will access the adventure playgrounds.
 - Sanitizing of all areas will still occur throughout the day by our onsite cleaner.
 - Students will be asked to wash their hands all through the day and sanitize.
 - *Face masks are not mandatory in schools. Victoria's Chief Health Officer has confirmed that the use of face masks or coverings by adults or children is not recommended in schools at this time. Unlike many public spaces and community settings, including public transport and supermarkets, schools are controlled settings where entry is restricted to only students, staff and those delivering essential school services and operations, and transmission reduction measures can be fully supported and reinforced, such as:*
 - *exclusion of unwell staff and students*
 - *temperature screening on arrival at school*
 - *regular hand hygiene practice and provision of hygiene supplies*
 - *restricted visitors and reduced mixing between groups*
 - *clear protocols in place to support rapid closure, case tracing and containment.*
- As has always been the case, staff or students who wish to wear face masks in school may do so and the recommendation from today is to wear a mask out in the community including when going to and from school.*
- Please check your Dojo regularly for communication from the school.
 - If your circumstances change and you are able to supervise your child/ren from home, please notify us as soon as possible.

We will see many students tomorrow and others throughout the week. Our school High Expectations always apply and we ask that all students attending maintain these expectations at all times on the school premises and online.

If you have any questions or concerns please contact myself, James Gow of Glennis Kerr (The Leadership Executive Team) at school through the week. Please be organised and stay safe.

Yours faithfully,



Patrika Rowley
PRINCIPAL